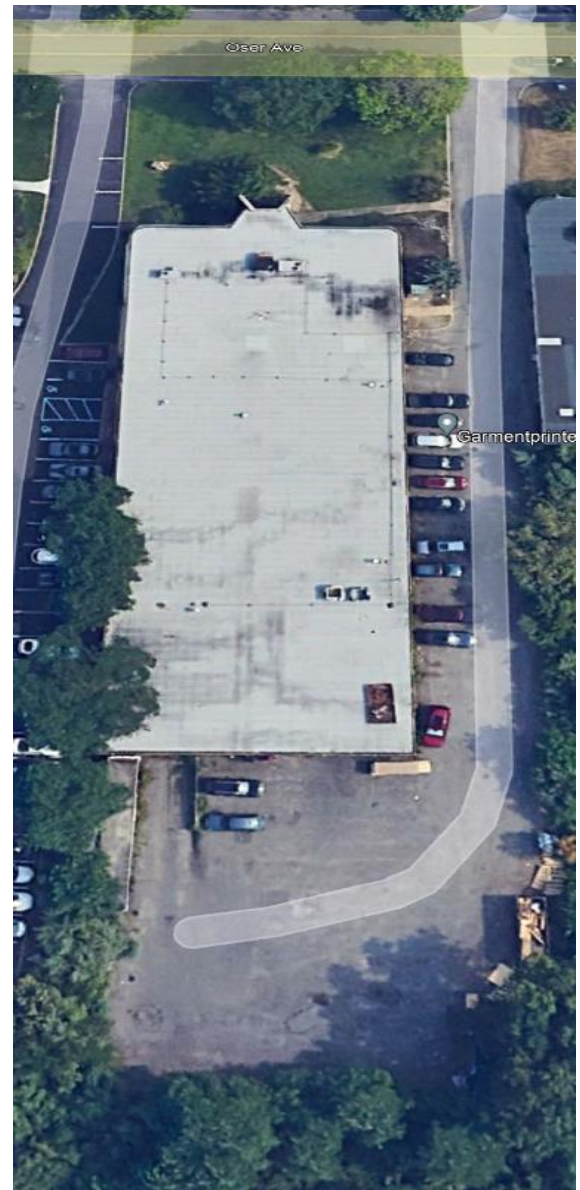
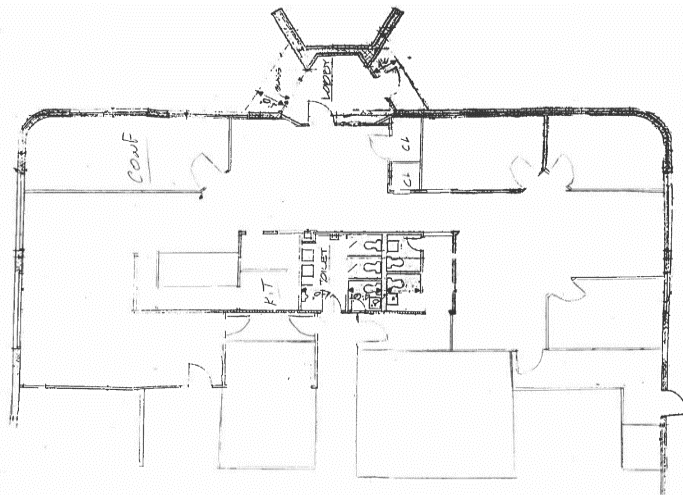


# 365 Oser Avenue Hauppauge NY

This Building is near the start  
of Oser Avenue in the 1,000-acre  
Hauppauge Industrial Park

Easy to get to Near all major roads  
Just off Long Island Expressway,  
Northern State and Sagtikos Pkwy



**365 Oser Ave. Hauppauge 20,000 SF**

- Office: 17% ±
- Truck Docks: 2
- Drive In: 1
- Power: 400 Amps
- Heat: Gas
- Height: 17 ± feet
- Sprinklers: 100%
- Parking: Side & Rear

**Available: August -September 2024**

**Nick Pizzardi**

Director of Leasing

631 242-6300 office

516 480-4701 cell

631 242-2820 fax

[NPizzardi@hrtld.com](mailto:NPizzardi@hrtld.com)

**HEARTLAND  
BUSINESS CENTER**  
"BUILDING FOR INDUSTRY THE BETTER WAY"