

# 370 Oser Avenue Hauppauge NY

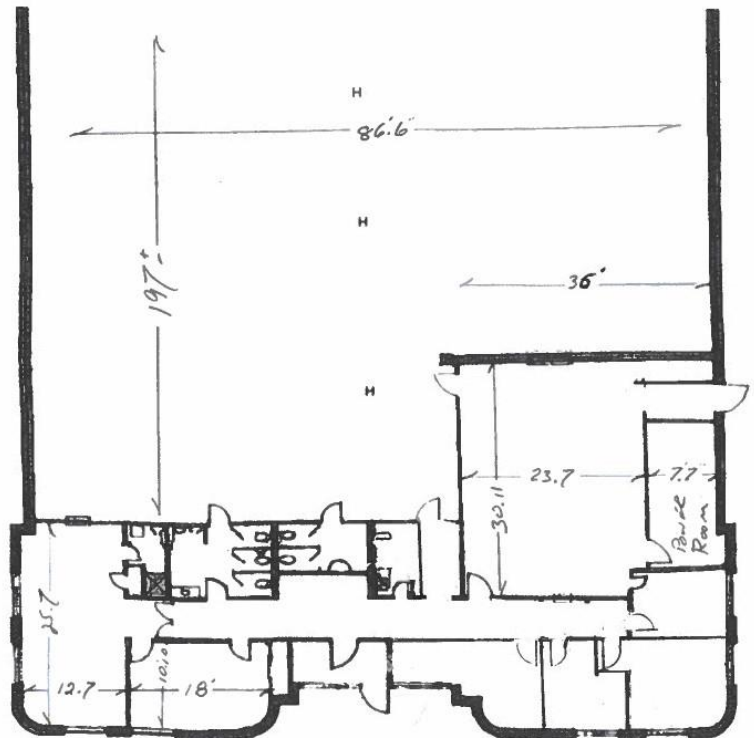


This Building is near the start  
of Oser Avenue in the  
1,000-acre  
Hauppauge Industrial Park

Easy to get to  
Near all major roads  
Just off Long Island Expressway,  
Northern State  
and Sagtikos Pkwy

370 Oser Ave. Hauppauge  
20,000 SF

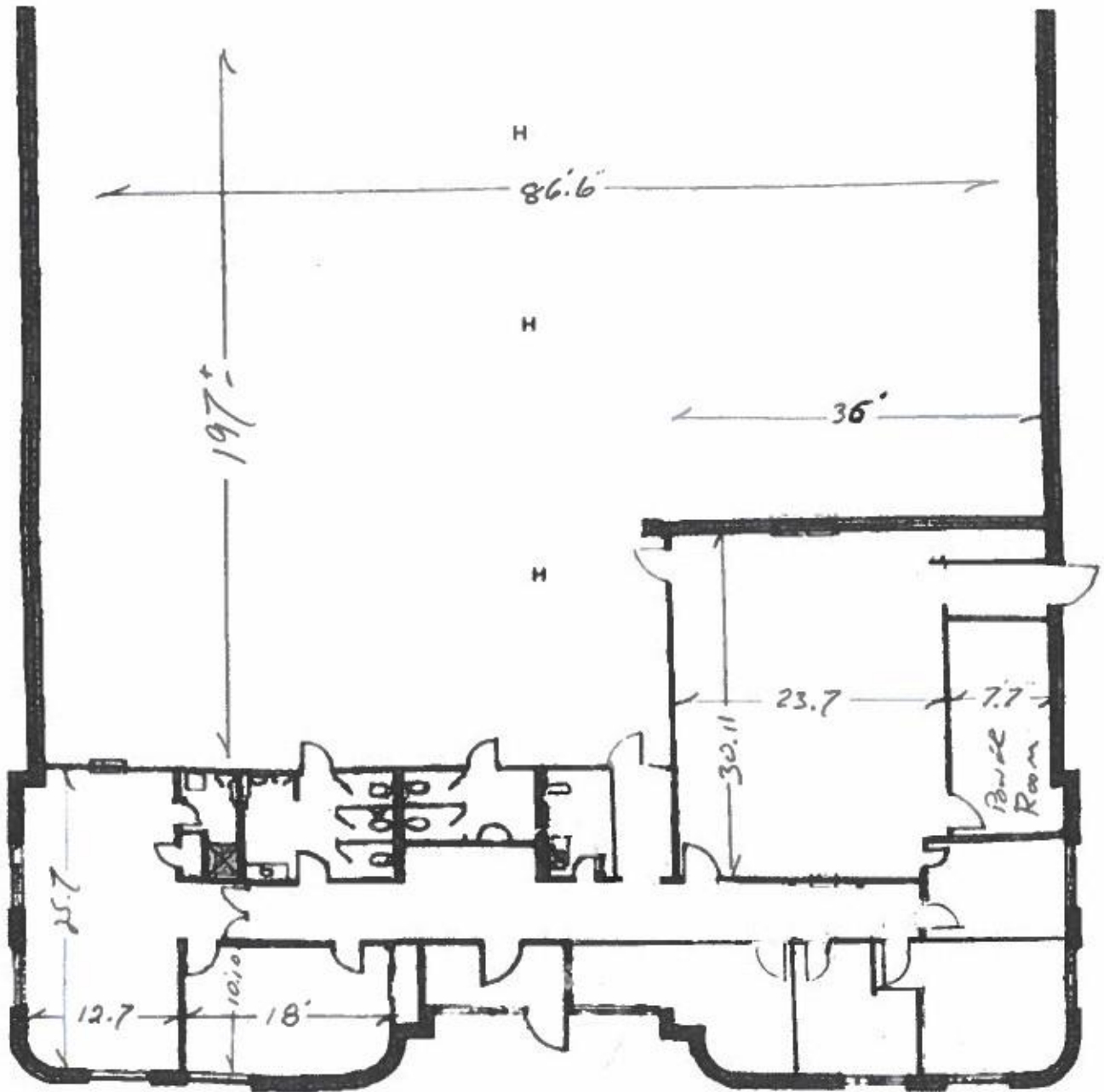
Office: 12% ±  
Truck Docks: 2  
Drive In: 2  
Power: 400 Amps  
Heat: Gas  
Height: 17 ± feet  
Sprinklers: 100%  
Parking: Side & Rear



## Nick Pizzardi

Director of Leasing  
631 242-6300 office  
516 480-4701 cell  
631 242-2820 fax  
[NPizzardi@hrtld.com](mailto:NPizzardi@hrtld.com)

**HEARTLAND  
BUSINESS CENTER**  
"BUILDING FOR INDUSTRY THE BETTER WAY"



**370 Oser Ave. Hauppauge  
20,000 SF**

- Office: 12% ±
- Truck Docks: 2
- Drive In: 2
- Power: 400 Amps
- Heat: Gas
- Height: 17 ± feet
- Sprinklers: 100%
- Parking: Side & Rear

**HEARTLAND  
BUSINESS CENTER**  
*"BUILDING FOR INDUSTRY THE BETTER WAY"*

**Nick Pizzardi**  
Director of Leasing  
631 242-6300 office  
516 480-4701 cell  
631 242-2820 fax  
[NPizzardi@hrtld.com](mailto:NPizzardi@hrtld.com)